

Flow by Flow EU – Egypt Bridge Building (FFEEBB)

EMECW - Action 2 – Lot 2

Anna Dukes

University of Wales Institute, Cardiff
2010 HEURO Brussels Seminar



UWIC



BUDDSODDWR Mewn Pobl
INVESTOR IN PEOPLE

Cardiff's **metropolitan** university | prifysgol **metropolitan** Caerdydd



INTERNATIONALISATION

“Is the process of integrating an International, Intercultural or Global dimension into teaching, research and services function of the institution”



EUROPEAN
COMMISSION



Cardiff's **metropolitan** university
prifysgol **metropolitan** Caerdydd

WHY INTERNATIONALISATION?

[Higher education should] *“educate for citizenship and for active participation in society, with worldwide vision ...educate students to become well informed and deeply motivated citizens, who can think critically, analyse problems of society, look for solutions to the problems of society, apply them and accept social responsibilities.”*

UNESCO World Declaration on Higher Education for the 21st Century



WHY INTERNATIONALISATION?

*HEA addressed internationalisation and stresses that all graduates, regardless of their **country of origin**, to be **informed**, **responsible citizens** able to **work effectively** in a **global multicultural context**. Universities has a role as the change agent*

WHY INTERNATIONALISATION?

Internationalisation focuses on preparing the University to be a **responsive** global citizen to fulfil a society need by equipping graduates to be **active** global citizens

HOW INTERNATIONALISATION?

- On Campus International Student Recruitment
- TNE operations with overseas campuses / partner institutions
- Distance Learning
- European Projects



EUROPEAN
COMMISSION



Cardiff's **metropolitan** university
prifysgol **metropolitan** Caerdydd

UWIC was granted the Project “Flow-by-Flow EU-Egypt Bridge Building” in July 2009 through the Erasmus Mundus – External Cooperation Window Programme

**Dates: Start: 15/07/2009
End: 14/07/2012**

**Project Coordinator:
Dr. Mohamed Loutfi
University of Wales Institute Cardiff**

FFEEBB Consortium

EU PARTNERS

University of Wales Institute, Cardiff –
UK

University of Bordeaux 1 - France

University of Graz – Austria

INPL – France

ITC – The Netherlands

Lund University – Sweden

Politecnico di Torino – Italy

RWTH Aachen University – Germany

EGYPT PARTNERS

Alexandria University

American University in Cairo

Beni Suef University

Cairo University

Fayoum University

Helwan University

Nile University

South Valley University

Suez Canal University

Tanta University



Project Main Objectives

- To enhance the international cooperation capacity of universities in Egypt.
- To promote cooperation between sending and hosting institutions.
- To enable students to benefit linguistically, culturally and educationally.
- To improve the transparency and recognition of studies and qualifications.
- To enhance the skills and qualifications of higher education staff.
- To enhance in the medium term the political, cultural, educational and economical links between the EU and Egypt.



FFEEBB Scholarships



- Two mobility directions:
 - **North-South Mobility**
 - European Nationals
 - Registered/Employed at one of the EU Partner Institutes (Target Group 1)
 - **South North Mobility**
 - Egyptian Nationality
 - Registered/Employed at one of the Egyptian Partner Institutes (Target Group 1);
or
 - Registered at an Egyptian University that is not part of the consortium (Target Group 2);
or
 - Graduate from an Egyptian University (Target Group 2)

FFEEBB Scholarships

Type of mobility	Monthly Allowance	Mobility Duration
Undergraduate	1,000 € per month	6 - 10 months
Master	1,000 € per month	10 months
Doctorate	1,500 € per month	6 - 26 months
Post-doctorate	1,800 € per month	6 months
Staff	2,500 € per month	1 month

Scholarship includes:

- ✓ A monthly allowance (see above)
- ✓ Tuition fees for degree students of up to 3000€ per year
- ✓ Insurance costs: up to 75€ per month
- ✓ Travel costs

FFEEBB Mobility Statistics

122 Mobilised Scholars in 2010

- 90% South-North mobility
- 30% Female Scholars



Type of mobility	Percentage
Undergraduate	13%
Master	41%
Doctorate	22.5%
Post-doctorate	16%
Staff	7.5%

Managing Mobility

A successful mobility is one where recipients have received knowledge and experiences which would not have been possible at their normal institution. They participate in an intercultural experience, heighten communicative competence and personal autonomy and make contacts that hopefully will be life-long.

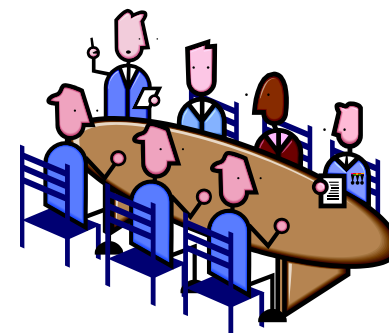
This is what a solid selection procedure, mobility implementation and management process aims to achieve.

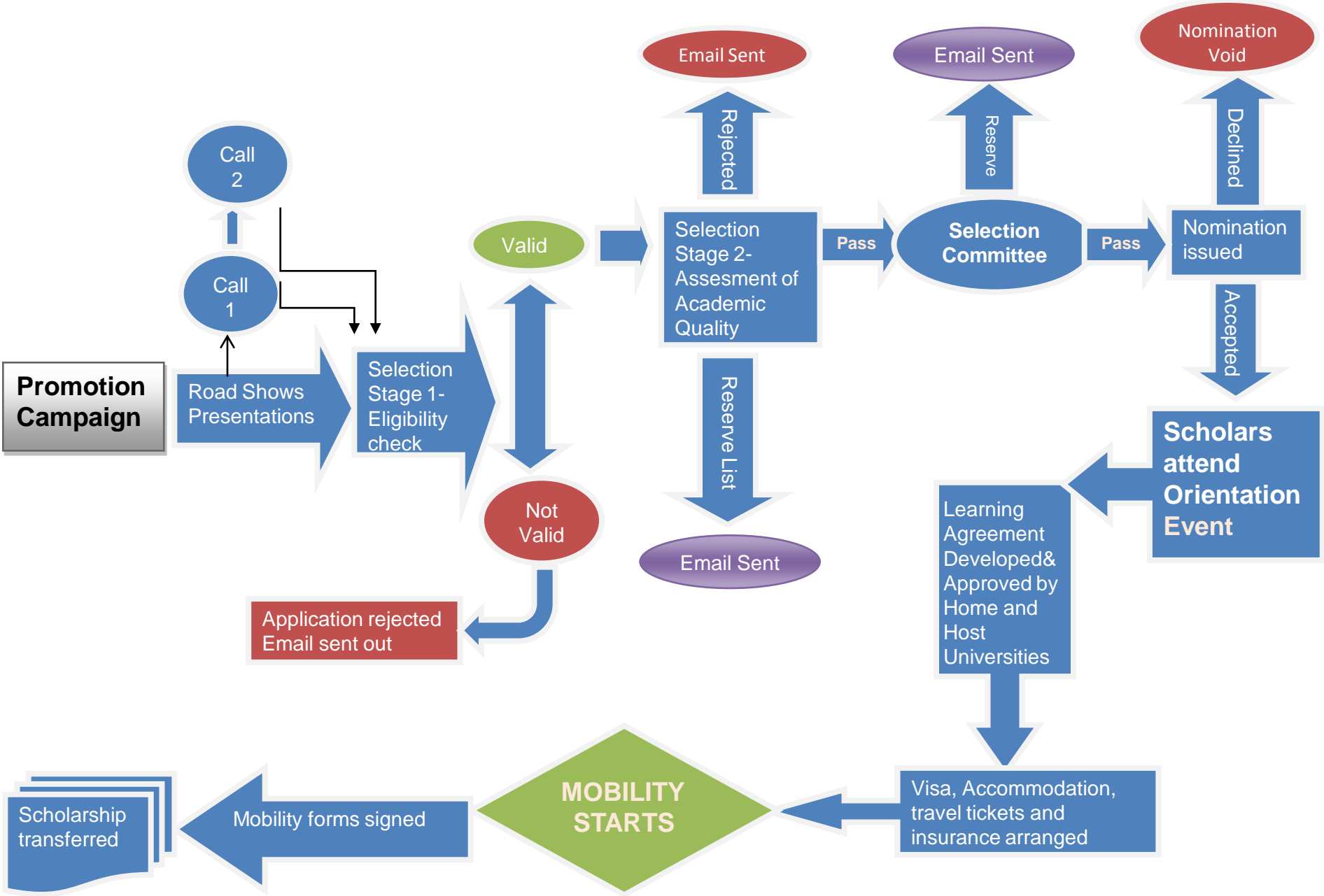
1. Promotion Campaign

- FFEEBB Project Website: www.ffeebb.com
- Print Media (Posters, Flyers etc.) distributed throughout faculties in both EU and Egypt universities
- Mobility 'Roadshows' in Egypt and EU.
- Testimonials from FFEEBB Alumni
- Sustainability of Mobility experience - Employability

2. Selection Process

- Operate a fair and transparent selection process
- Suitable timeframe for Call for Applications – 45 days
- Involvement of all partners in Evaluation & Selection Process:
 - Eligibility Check (Home University)
 - Assessment of Academic Quality (Host & Home University)
 - Selection Committee
- Notification issued to all applicants





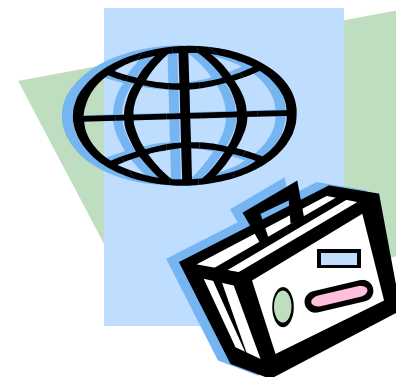
3. Recognition

- Academic Recognition of periods of study is a key component in any transnational mobility programme.
 - Degree and non-degree seeking students
- Necessity to establish sound procedures and instruments
 - Importance of learning agreements
 - Involvement of key actors (including the student) from Day 1
- Institutional commitment to recognition is also essential
 - Challenge of third country cooperation
 - Recognition process sees involvement of Academic Coordinators, International Office and Institution as a whole – capacity building for third countries.

4. Quality Assurance

- Logistical Services

- Development of Learning Agreement
- Visa / Immigration advice and support
- Accommodation / Travel / Insurance
- Pre-Arrival Guide (practical info)
- Orientation / Welcome Events
- Development of Student Agreement
- Buddy System
- Organising cultural events
- Offering language courses



Monitor & Evaluate Mobility

- 1) To ensure student mobility is of same level regardless of the host institute
 - Academic & Administrative

- 2) Review the benefits / areas of improvement to aid in future mobility exchanges.

How?

- Monitoring Visits
- Questionnaires / Surveys
- Final Evaluation Reports

Benefits of Student/Staff Mobility



- Upskill Graduate Body – Global Citizens
- Narrowing the Gap of Academic recognition between EU and EG HE.
- Institutional Collaboration and Development of Long-standing relationships
- Joint Research Activities
- Information Sharing via Mobility Alumni

facebook



- Message all members
- Edit group settings
- Edit members
- Invite people to join
- Create group event

Write something about FFEEDB Scholars 2010.

Information

Category:
Student Groups - Abroad/Overseas Groups

Description:
Welcome to the official FFEEDB Scholars 2010 group site. A place for you to chat amongst fellow scholars throughout Egypt and the EU. Why not post some photographs, let us know how everything is going?

Best wishes,
Anna & Karim

FFEEBB Project Team

Privacy type:
Closed: Limited public content. Members can see all content.

Admins

- Mohamed Loutfi
- Karim Hamdy
- Anna Dukes (creator)

Members
6 of 59 members See All

FFEEBB Scholars 2010

Wall
Info
Discussions
Photos
Video
Events

Write something...

Attach:

Share



Karim Hamdy Wishing you ALL a HaPpY Eid Abroad :) Options

Yesterday at 10:39 · Like · Comment



Omda Elmasry كل عام وانتم جميعا بخير وسعادة بمناسبة عيد الأضحى المبارك أعاده الله عليكم جميعا باليمن والخير والبركات



FFEEBB Scholars 2010 photos

Monday at 22:56 · Like · Comment · Share

Hany Shaaban likes this.



Omda Elmasry

Monday at 22:57 · Like · 1 person

Write a comment...



Karim Hamdy Waiting for your propositions to be all online....

09 October at 17:04 · Like · Comment

Abul-Hamd E. Mehanni likes this.



Abul-Hamd E. Mehanni Dear all, I dont accept this time, I have more lab work (it is a work time, we are in Europe not Egypt !!!), I suggest that the optimum time after 5 PM at the same Day too. Dr Abul-Hamd Mehanni, PostDoctoral Grant, Nancy University, INPL, F...

See more



EUROPEAN COMMISSION



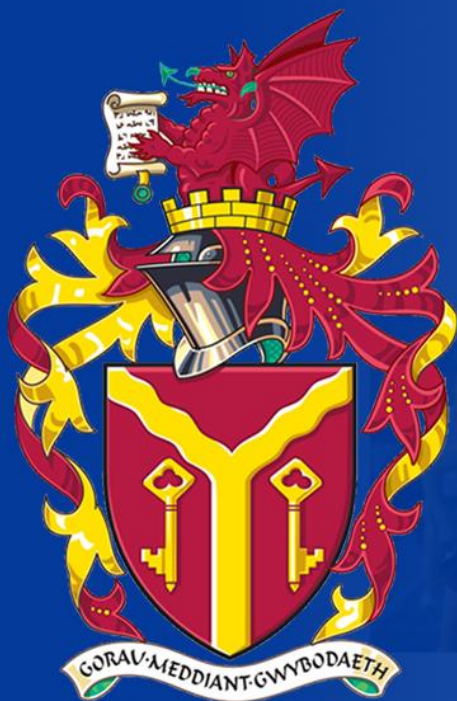
Cardiff's **metropolitan** university
prifysgol **metropolitan** Caerdydd



Any Questions?



THANK YOU FOR YOUR ATTENTION



UWIC



BUDDSODDWR Y MEWN POBL
INVESTOR IN PEOPLE

Cardiff's **metropolitan** university | prifysgol **metropolitan** Caerdydd



EUROPEAN
COMMISSION